



NIH Loan Repayment Programs

Ericka Boone, PhD
Director

Division of Loan Repayment

Agenda

Overview and Description of the LRP

Eligibility and Qualifying Loans

Timeline, Important Application Tips

Program Success Rates

Wrap Up and Resources





**Student loan debt
represents a**

**But the NIH LRPs
Can Help!**

**sustaining a
research career**



NIH

National Institutes of Health
Office of Extramural Research

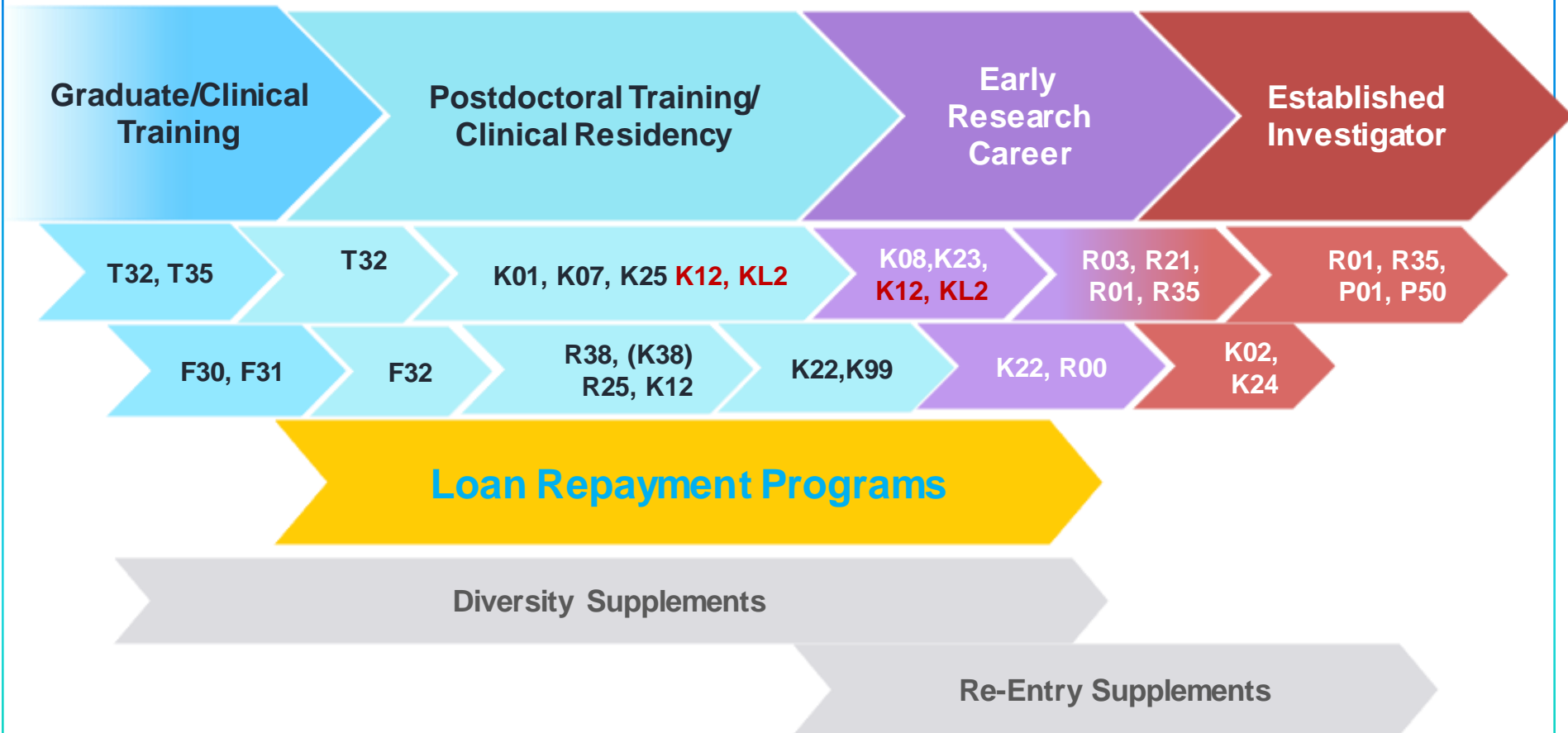
National Institutes of Health

NIH is made up of **27 Institutes and Centers**, each with a specific research and research training agenda, focusing on particular diseases or body systems

Unified Goal:

**Support the training
and career development
of the biomedical research workforce**

Career Path and Funding Options



About the LRPs

NIH Loan Repayment Programs (LRPs) are a **vital component** in our nation's effort to keep health professionals in research careers

Here's how it works:

YOU: Commit to perform research for 2 years



NIH: Repays up to **\$50,000/year**** of your qualified educational debt and covers resulting Federal taxes (39%)



Outcome: Increase in nation's stock of biomedical research scientists

***General ACGME Research LRP pays \$20K/year**



NIH National Institutes of Health
Office of Extramural Research

6 Extramural NIH LRP Subcategories:

For individuals conducting research at non-profit institutions



Clinical Research

- Patient-oriented research conducted with human subjects or materials of human origin (including cognitive phenomenon) on the causes and consequences of disease in humans



Pediatric Research

- Research related to diseases or disorders in children
- Basic research allowed



Health Disparities Research

- Research focusing on minority and other health disparity populations
- Basic, clinical, social and behavioral research allowed
- Applications reviewed by NIMHD



Contraception & Infertility Research

- Research focusing on conditions impacting ability to conceive or bear children and provide new or improved methods of preventing pregnancy
- Applications reviewed by Eunice Kennedy Shriver NICHD



Clinical DB

- Same as Clinical Research LRP
- Available to clinical researchers from verifiable disadvantaged backgrounds
- Reviewed by NIMHD

Research on Emerging Areas Critical to Human Health (REACH)

- Available beginning September 2021
- To recruit and retain researchers pursuing major opportunities or gaps in emerging areas of human health
- NIH ICs determine gap/emerging areas of research priority areas



Basic LRP Eligibility Criteria

Extramural



Doctoral Degree

M.D., Ph.D., or equivalent

Exception: Contraception & Infertility Research LRP



Research Funding

Domestic nonprofit, university, or government organization; **NIH grant support NOT required**



Citizenship

U.S. Citizen or permanent resident



Educational Loan Debt

At least 20% of applicant's annual base income



Research Time

At least 20 hours/week



NIH National Institutes of Health
Office of Extramural Research

Qualifying Loans

NIH WILL Repay:

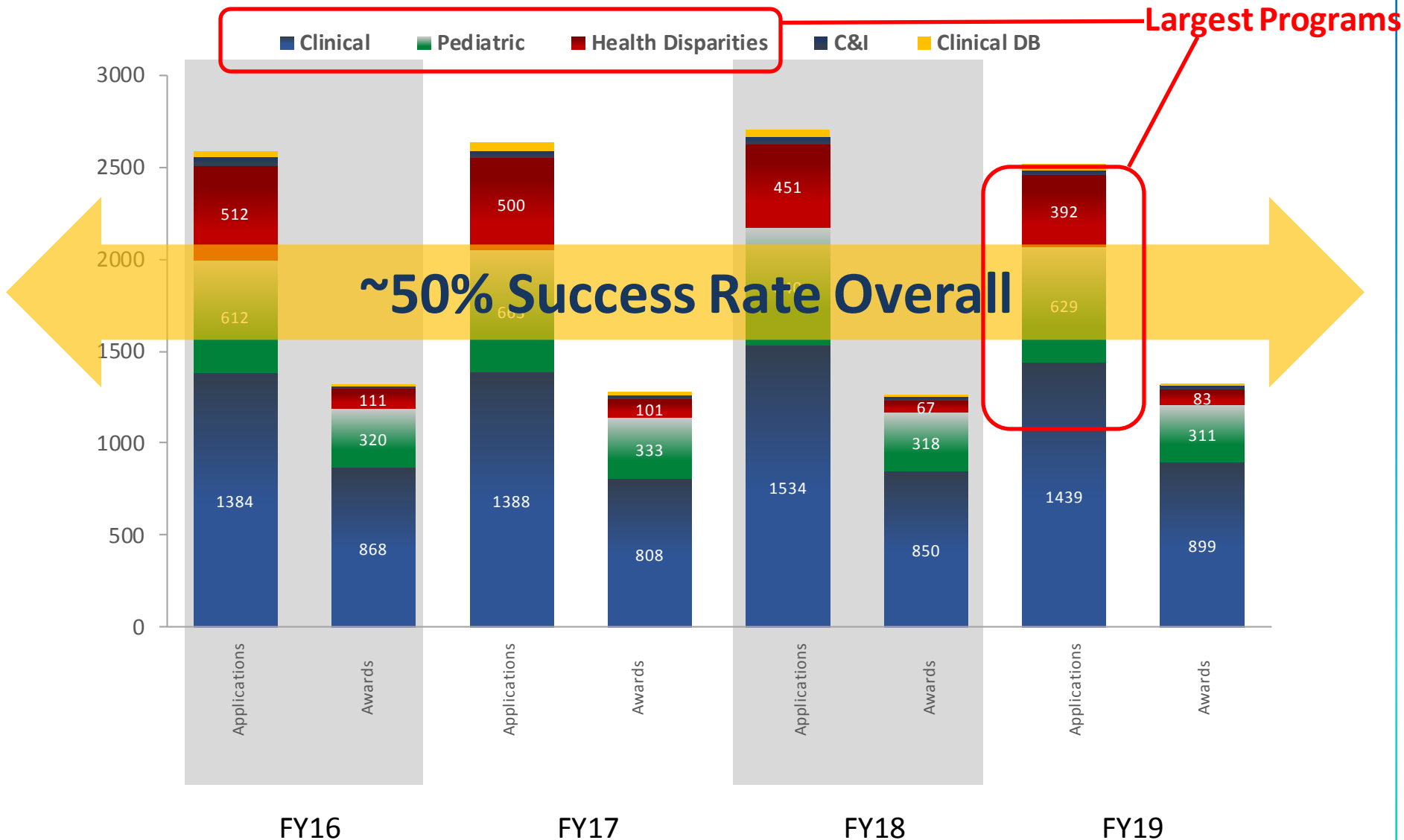
- Educational loans from undergraduate degree to first terminal degree
- Educational loans backed by the U.S. government
- Educational loans from accredited U.S. academic institutions and commercial lenders

NIH Will NOT Repay:

- Non-educational loans (e.g. home equity loans)
- PLUS loans to parents
 - *EXCEPTION: PLUS loans disbursed to graduate and professional students on or after July 1, 2006, qualify for LRP repayment*
- Loans from non-US governments or institutions
- Loans converted to a service obligation, delinquent or in default
- Loans consolidated with another individual (e.g. spouse or child)
- Loans of full-time Federal government employees or VA Fellows



NIH LRP Applications & Awards, FY16-19



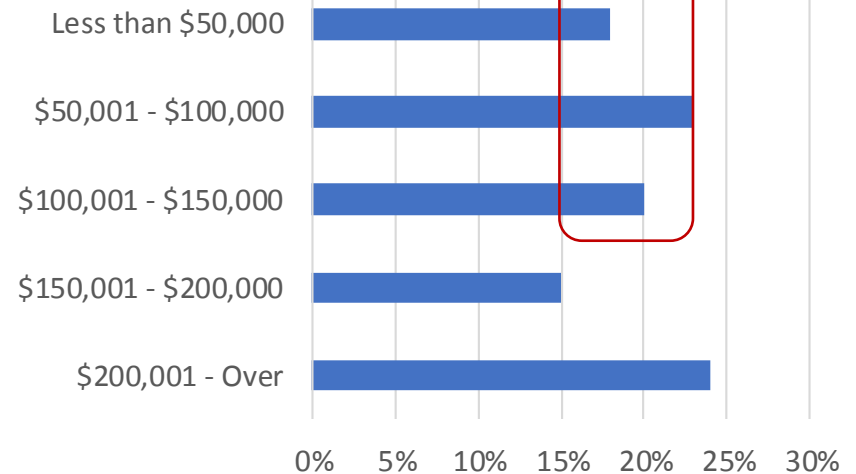
NIH Extramural LRP Applicant Snapshot, 2019

Avg Age/Award

Average Age
37

Average Award
~\$56,000

Average Debt (New Awards)



Applications vs. Awards, by Gender

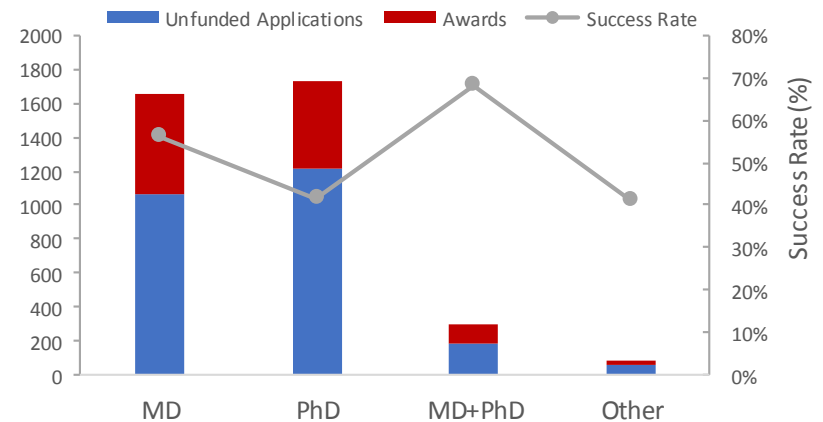


- 1,567 Applications
- 697 Awards
- Success Rate = 45%



- 1,136 Applications
- 565 Awards
- Success Rate = ~50%

Applications vs. Awards, by Degree



What to Keep In Mind While Interested in Applying?? Planning Your Application



Your Application = Roadmap for Reviewers



The Application – Major Sections



Research Activities (*'meat and potatoes'*)

- **Personal Statement** – brag about you
 - Highlight previous research training experience, how developed scientific interests/accomplishments; short and long-term career goals
- **Training/Career Development Plan**
 - What skills, etc do you need to acquire along your path to independent researcher (e.g., training and professional and leadership development opportunities; grantmanship workshops, conference attendance, etc) – **include timelines for next 2 years**
- **Proposed Research Plans**
 - Describe planned research activities & specific roles/responsibilities – **include timelines for next 2 years**

Research Environment

- Why are you where you are? Who or what is important there?

Loan Information (*new applicants only*)

- Lender and servicer information, loan number, total loan amounts, loan status (e.g., in repayment/forbearance)

What Are Reviewers Looking For?



Reviewers evaluate an applicant's **potential to succeed** in a research career by rating:

- Applicant's previous **training and research experience**
- Applicant's **commitment to a research** career
- **Strength and quality** of letters of recommendation
- **Quality and appropriateness** of the research environment
- Research progress (*for Renewal applications only*)

Who are your road trip buddies??



Career-Related Advancements of the LRPs



Extramural LRP Outcomes Study

Annual Persistence in Research (*p≤0.01)

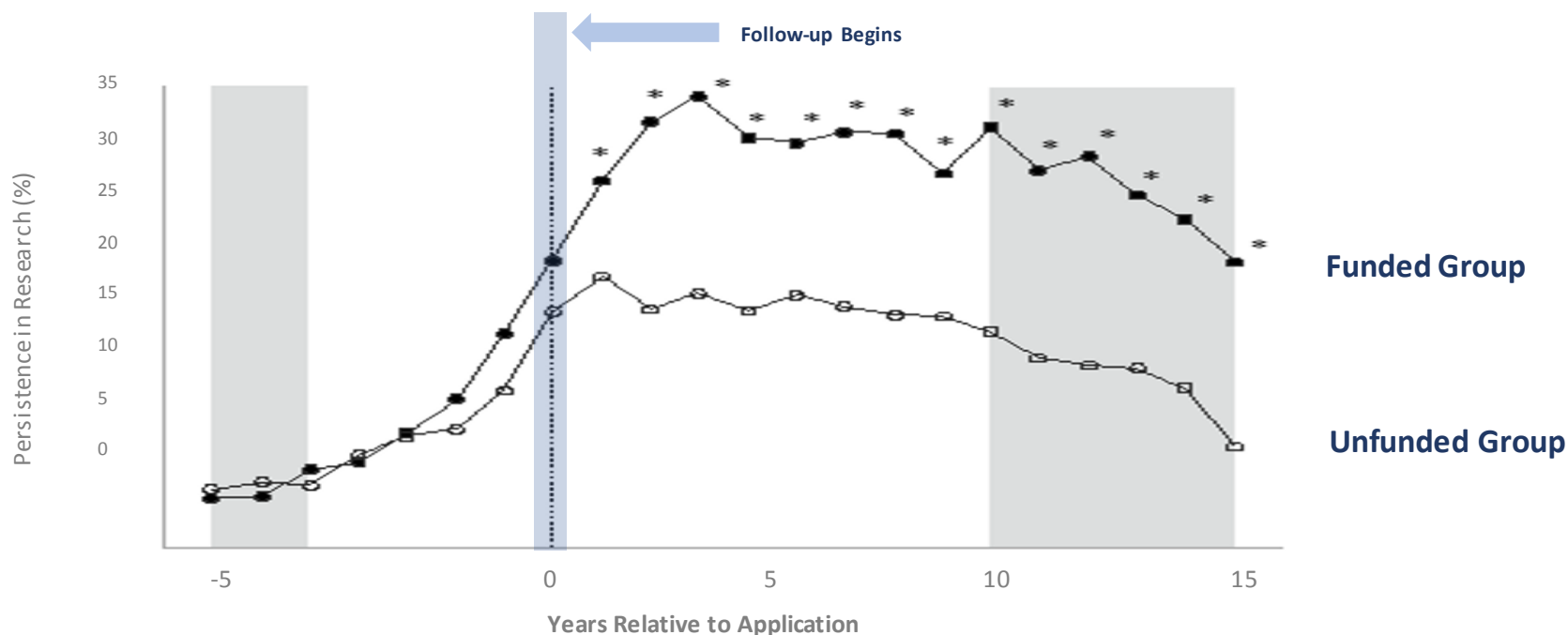


Figure represents raw means for funded and unfunded groups 5-years prior to, and 14 years after, LRP application. Unfunded starting n=1,958; funded starting n=1,095.

Yearly retention rates quickly diverge post application:

- Significant gains in research activity **immediately after LRP award**; 10-15% point difference (funded vs unfunded)
- Overall two-to-three-fold increase in persistence in research each year, **for 14 years** (funded vs unfunded)



NIH

National Institutes of Health
Office of Extramural Research

Direct Career and Personal-Related Benefits

- **\$\$\$** -- Relief from the tremendous burden of student loan debt at a vulnerable career decision point
- Ability to pursue career-related passions without as much worry about salary
- Protected research time
- Practice/preparation for applying for other NIH grant mechanisms
- Added boost to career preparedness & increased productivity across career
- **Ego boost you need to show you that you can do this!!** You are conducting work that is important and **FUNDABLE!!**



Most Common Mistakes...



More Obvious Reasons:

- Not contacting PO prior to application (a clear understanding of IC mission/priorities is essential to submitting a well-crafted application)
- Rushed preparation (i.e. careless mistakes in the application)
- Questionable research commitment and weak research plan
- Failure to adequately describe the mentoring and training/career development plan, research timelines
- Slim publication record
- Lukewarm recommendation letters
- **Not applying**

Less Obvious Reasons:

- Many high achievers share a dirty little secret:

The Imposter Within



What is Imposter Syndrome?



- *Pattern of thought where a person discounts/doubts accomplishments and has a persistent fear of being exposed as 'not as good/smart'*
 - Trying to hang out with the 'smart kids', but constantly feeling like someone is going to figure out you don't know what you're doing..."
- Feelings of anxiety, doubt; negative self-talk; dwelling on past mistakes
- Perfectionism/overpreparation...no room for error
- Experienced often by highly successful, intelligent people (i.e., does not = low self-esteem or intellect)
- Often sparked by new opportunities
- NO ONE **EVER** ADMITS IT, so you feel alone
- Can lead to:
 - ✓ Procrastination
 - ✓ Missed Opportunities (e.g., jobs, new roles, giving deference where not deserved, etc.)
 - ✓ Wasted Time and Emotional Energy



Free Yourself

Plant Your Feet....Breathe

- Overwhelmed? Stop, unclench your teeth, take a breather
- Separate true feelings/concerns from your fears

Silence is NOT Golden

- You don't have to go it alone; don't have to know all the answers
- It's Ok (expected) that you ask questions and for help/support

Be Your Own Best Friend

- Play a new mental tape; **visualize your success** (vs. imminent failure)
- “How can I make this happen?” versus, “I don't think this will work out”

Brush Your Shoulders Off

- Reframe internal “mistake-o-meter”; criticism or questions \neq your lack of ability
- Detach issues/criticism from feelings about who YOU are (not remotely the same thing)



Free Yourself

Cut Out the Instagram/Snapchat Mentality

- “Comparison is the thief of joy” – Teddy Roosevelt
- Stop idolizing mentors/”possibility models” and comparing your ‘blooper reels’ to their ‘success reels’!

Do Something Good for Yourself and Someone Else

- Mentoring empowers you and someone else!

Engage in Self-Care

Self care is not selfish! What do you do to take care of yourself...recharge?

What’s Your Mantra?

What can you tell yourself everyday to support **YOU**?

Me? I want to be authentic to me and intentional with the energy that I put into the world





Advice to Those Experiencing the ‘*Imposter Monster*’

“Realize it is a natural visitor in your psyche and learn to control it and also leverage its good points like keeping you on your toes and making sure you strive for better,” ***Michelle Jones-London, Chief, Office of Programs to Enhance Neuroscience Workforce Diversity, NINDS***

“Talk to others – especially someone you trust – tell them about your fears – ask yourself why you feel this way – remind yourself about how much you’ve accomplished. Remember a time when you worried that you were not good enough but discovered that you were much more qualified than what you thought!”, ***Hannah Valantine, M.D., Chief Officer Scientific Work Force Diversity***



Still Interested in Applying??



RESOURCES

LRP Ambassador Program

What is the LRP

The LRP Ambassador Program is a group of individuals that promote the NIH LRP.

LRP Ambassador Overview

What does an LRP Ambassador do?

LRP Ambassadors serve as a bridge between the LRP and the community. They identify potential eligible individuals, share information about the LRP, and help individuals complete the sign-up process.

Since the Ambassador Program is a password-protected site, Ambassadors must connect to the sign-up process to access the site.

Become an LRP Ambassador

Sep 1, 2016 - Dec 1, 2016

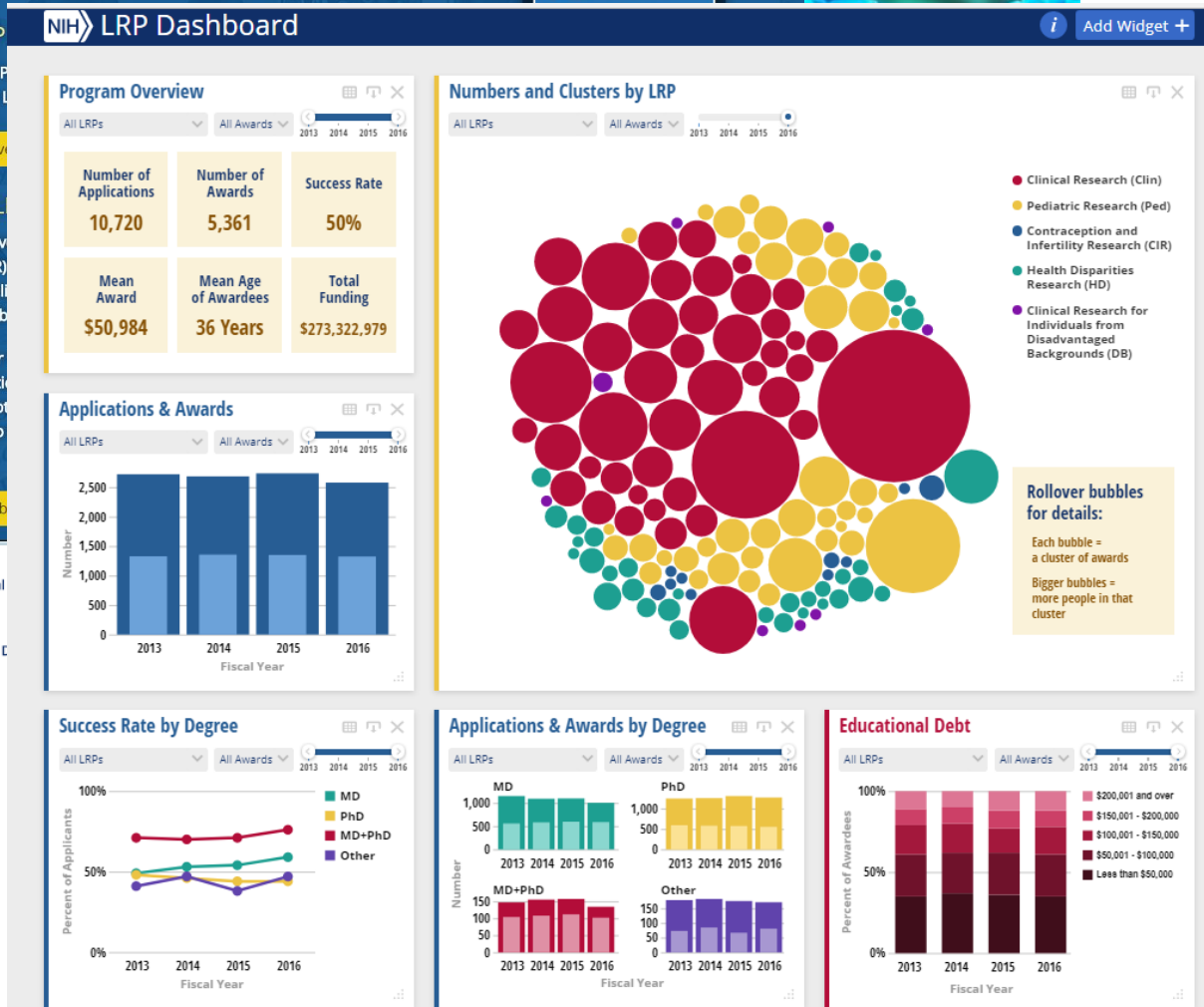
Colleague and Institutional Documentation Period

Sep 1, 2016 - Dec 1, 2016

Contract and Certification Deadline

Dec 31, 2016

LRP Data Dashboard



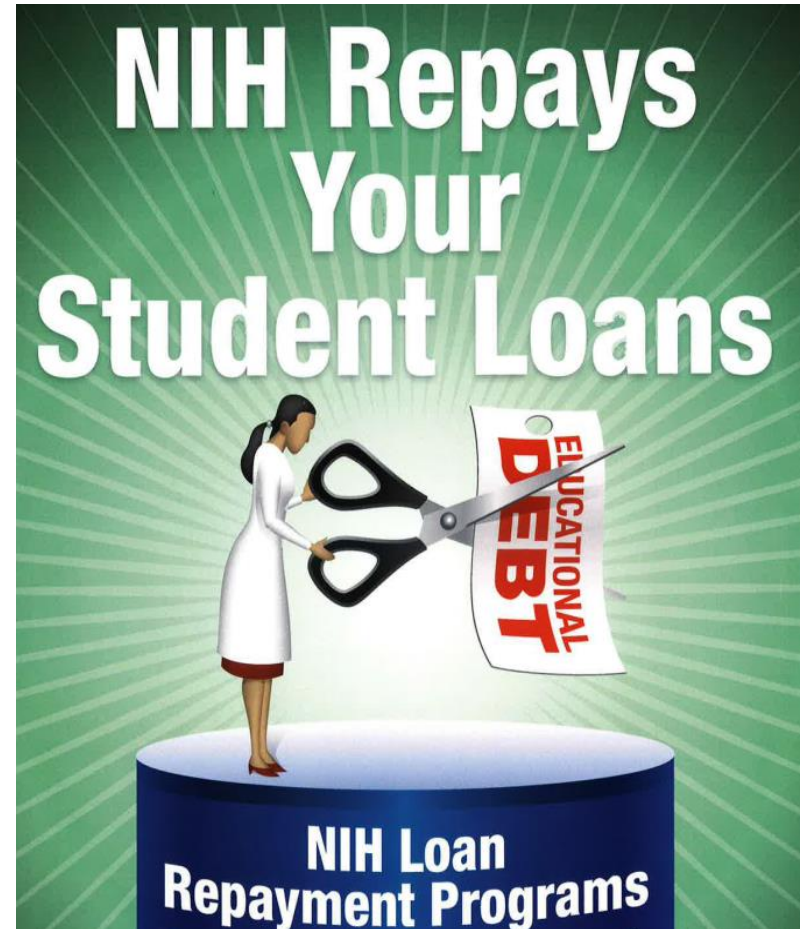
<https://lrp.nih.gov/>

Summary

NIH LRPs will repay:

- Up to **\$100K over 2 yrs** in educational loan repayment
 - Depending on debt level
- Coverage of most Federal taxes resulting from the NIH LRP
- 2 year initial contracts
 - 1 or 2 year competitive renewals
- 50% application success rate overall

**Extramural LRP
Application Deadline
Nov 15, 2020**



Contact Us



www.lrp.nih.gov



(866) 849-4047



lrp@nih.gov



NIHLRP



[@NIH_LRP](https://twitter.com/NIH_LRP)

boonee@nih.gov



National Institutes of Health
Office of Extramural Research